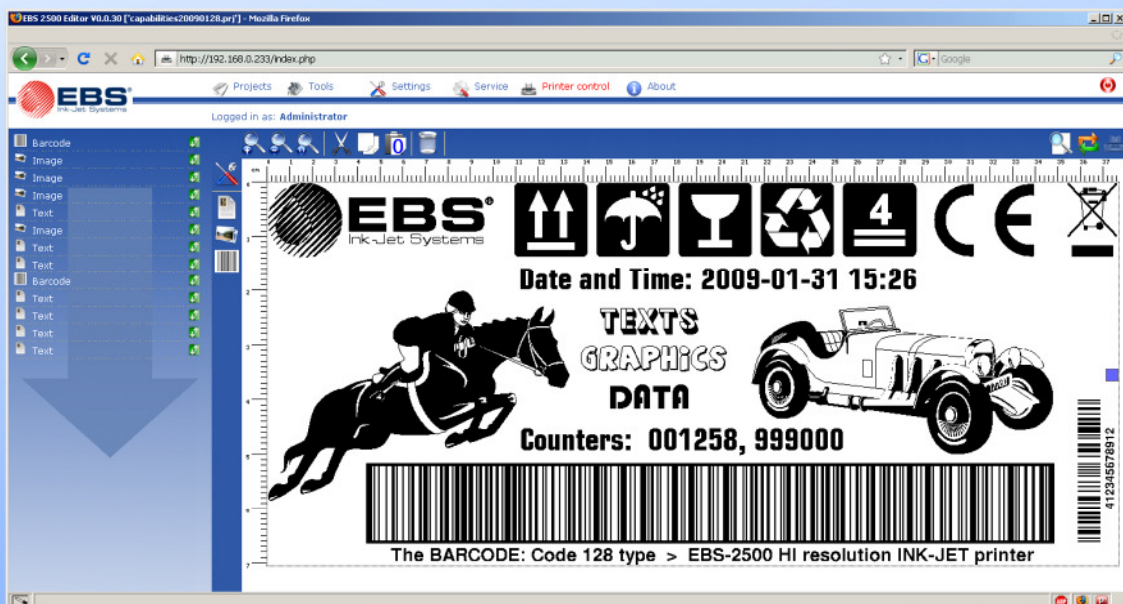


EBS 2500 High Resolution Ink-Jet Printer



Picture: Real-time online editing in browser window, True WYSIWYG

EBS 2500 technical specifications

Printer performance

- ☑ High Resolution Print Head - Ink-Jet technology
- Number of nozzles: 510
- Nozzle pitch: 141.1 µm (approx. 1/180 inch)
- Vertical resolution: 180 dpi
- Active printing height: 71,8 mm (2.827 inch)
- Firing frequency: 7 kHz
- Printing speed at horizontal resolution:
 - 360 dpi: 30 m/min (98.42 ft/min)
 - 180 dpi: 60 m/min (196.85 ft/min)
 - 90 dpi: 120m/min (393.70 ft/min)
- Ink: oil ink and others
- Drop volume: 35 pl
- Intensity control (of whole printout)
- Print distance from nozzle to substrate (for best quality of printouts): maximum 4 mm
- Ink bottle capacity: 0.5 l (allows for up to 0.5 million of printouts - project resolution: 500 x 500, 10% ink coverage)

Memory for user data / projects storage

- USB pendrive: factory installed 1GByte
- Filesystems: FAT, FAT32 (possibility of backup data with standard PC computer)

Barcodes (*)

- Numeric:** EAN codes, Code 11, Code 25, Codabar, Leticode and others
- Alphanumeric:** Code 39, GS1-128 (UCC/EAN-128), Code 128, 2D:Data Matrix, 2D:MicroPDF417 and others

(*) human readable characters are not included

Communication, connections

1x Ethernet:

- TCP/IP
- Web server
- Network neighborhood (for pendrive network share)

2x USB 2.0 connectors:

- Storage memory (factory installed pendrive)
- Other optional EBS equipment (RS-232 converter, signal lamp, etc.)

Triggering / synchronization

- Built-in product detector (photocell)
- External product-detector connector (optional)
- External shaft encoder connector (optional)

Dimensions and weight

Dimensions:

- Length: 420 mm (16.54")
- Width: 160 mm (6.30")
- Height: 210 mm (8.27")

Weight: 4.8 kg (2.18 lbs) - with 0.5 l Ink bottle

Cabinet

Stainless steel

Protection class (BS EN 60529): **IP 54 / NEMA13**

Environment

- Operating temperature range 5 - 40°C (40 - 104°F)
 Relative humidity up to 80% non-condensing
 Power supply (included in cabinet):
- AC 100-240 V, 50-60 Hz
 - 0.95 - 0.45 A / max. 24 W - low power consumption

Editing & printing capabilities

- **State of the art, all-in-one system for high quality printouts on all porous surfaces. Replaces expensive labels. Best quality at all times.**
- Lightweight, compact and easy to mount.
- Web (www) editor allows editing via Ethernet interface
- LCD 5.7" color display with touch screen for printer control, file management & maintenance with preview function of message (Editing via PC)
- Works virtually under any operation system (Windows®, Linux®, Mac®) - no need to install printer-specific software – only general-purpose Firefox® web browser is required,
- Fixed text + very flexible types of variable text (counters, date (including offset and shifts), expiry date, text files, RS-232 data)
- TrueType® fonts with possibility of installing unlimited number of additional user fonts
- Graphics / logos with free resizing, PNG file import function
- Text / graphics / barcode rotation
- Horizontal rotation (reverse print) / vertical rotation (upside down print)
- Useful online help including a number of illustrations and animations
- Automatic support for making test printouts while editing
- Unique intensity regulation for different porous surfaces
- Automatic conveyor parameters detection
- Multi-level user management with password protection
- Waste ink collector (maintenance system)



(Picture: Editing window in Firefox browser)

Other benefits

- Best price/performance ratio
- Highest quality components
- Future-proof with firmware upgrade possibility

